



# HS2

Retractable

# Roof

Greenhouse

# WRN

Structure

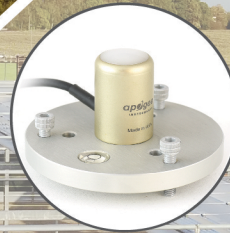
....."we've got you covered"



prospex

HS<sup>2</sup>  
Heescher Shading  
Hanging System

## WHAT IS HS2?



PAR sensor



Weather Station



PLC

The Heescher Shading Hanging System, better known as HS2 is a modular screen system for Horticulture. It is a fundamental innovation in the realm of shading systems. Its low cost and less time-consuming nature make it a perfect combination of stability, easy handling, durability, and total flexibility.

## Construction & Material

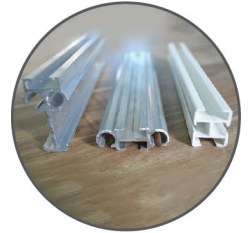
HS2 consists of several segments of less than one-meter width. These segments don't require any hooks to hold them. Under strong winds, hooks could damage the new material and destabilize it. Therefore, HS2 eliminates the need for the installation of a single sheet over an entire bay. The Warren (WRN) structure used in HS2 helps it to bear the weight of the entire Hanging System. HS2 comes in three types of hanging profiles. The high strength Aluminium profile can withstand up to 1200 kg/Sqm. The plastic profile, on the other hand, is quite cost efficient.

## Structure

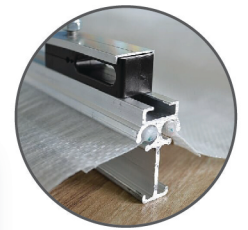
HS2 comes with a Warren (WRN) structure. It is possible to replace the roofing film during operation at a meager cost. It merely involves the clearance of narrow corridors at the sides. Also, a complete exchange can be done from outside, without entering any interior space. This can be especially advantageous if there is another system installed under the roof screen. The HS2 retractable roof greenhouse enhances yields by optimizing the growing environment. It makes it easy to control ventilation, thereby, protecting the crops against heat, wind, rain, and hail. We also provide SIEMENS PLC for an automatic roof, climate, and irrigation control.

# Benefits of using HS2 Retractable Roof Greenhouse WRN Structure

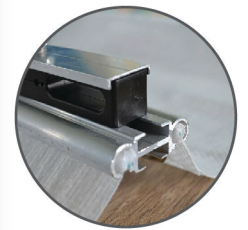
HS2 provides the crops a 99% watertight environment. It offers excellent ventilation control, thereby, giving the crops protection against heat, rain, wind, and hail. Not only does it provide optimum protection, but also allows for the repair works to be carried out during operation without the removal of plants placed below. With long-term material durability, HS2 offers a complete roof system by using all the components from a single source. It also offers foolproof assembly in a single phase. The high strength clips used in HS2 help to open and close the roof smoothly with minimum friction. Therefore, it makes it possible to open and close the roof in less than one minute, and repeat the process multiple times in a day. It further helps to maintain the humidity and vapor pressure deficit (VPD) inside the greenhouse, thereby, giving more control on humidity and increased productivity. HS2 adequately meets the latest standards for fire safety, thereby, giving you enhanced security and assurance of better Rol on your crops. HS2 also offers an ideal system for rainwater harvesting since it allows for the collection of rainwater in gutters.



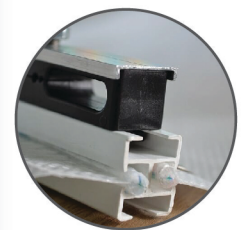
3 types of hanging profiles



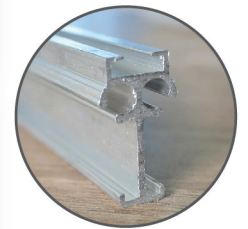
Profile 1



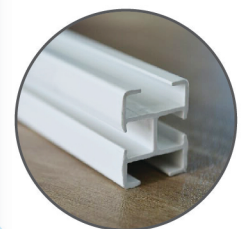
Profile 2



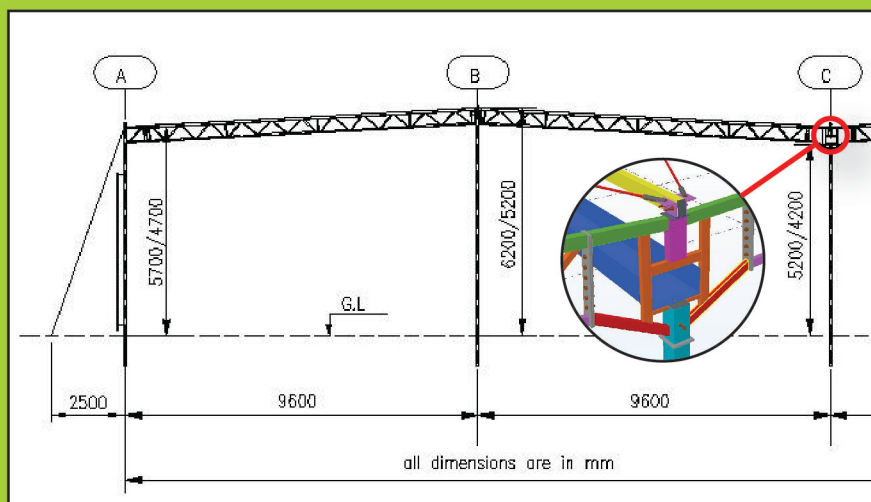
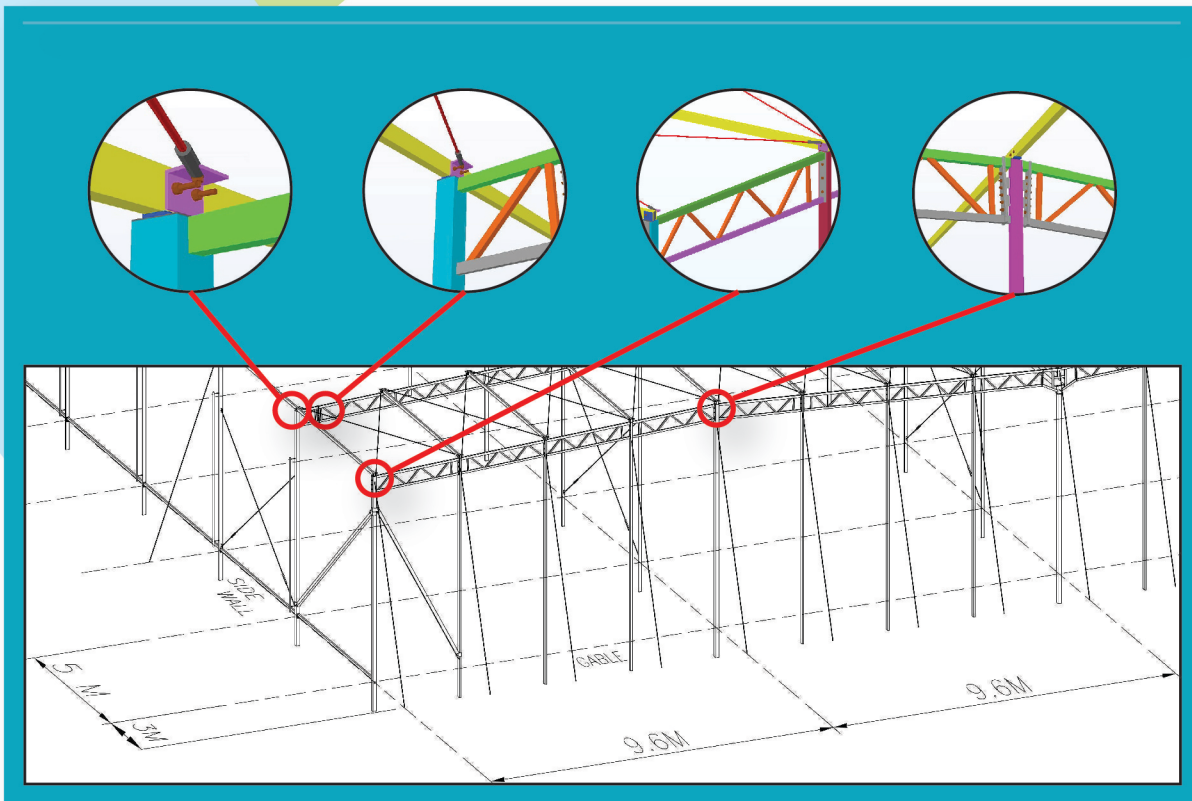
Profile 3



High strength aluminum profile



Low cost plastic profile

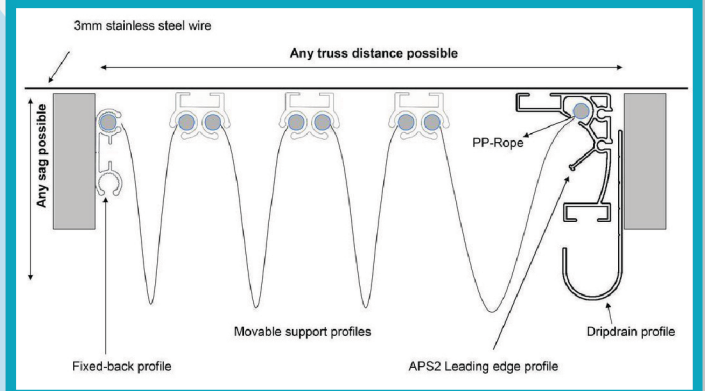


Description	Hs2 Roof Aluminum Profiles	Hs2 Roof Plastic Profiles
<b>Technical Details</b>		
Wind speed house must resist when roof and walls are closed: kph	120	80
Faster Installation of roof material or replacement	Faster	Faster
Easy maintenance of roof system	Yes	Yes
Replacement of damaged fabric in roof	Less expensive	Less expensive
Replacement of roof hooks	No hooks	No hooks
Type of reinforcements used to connect the fabric with hooks	Aluminum profile	Plastic profile
Snow and hail load when roof is extended kg/m <sup>2</sup>	1200 kg/m <sup>2</sup>	50 kg/m <sup>2</sup>
Can support a hanging crop like tomatoes	Yes	Yes
Can support an irrigation boom from the truss	Yes	Yes
Conversion of structure from without gutter to with gutter	NA	NA
<b>Crop requirements</b>		
Plants must be kept 99% dry	Yes	Yes
Plants can be protected from the impact of a hard rain and from excessive cold and heat	Yes	Yes
Stationary or retractable insect net can be installed under the roof	Yes	Yes
Auxiliary layer can be added directly to Hs2 profiles for using extra screen (also retrofit)	Yes	No
House width in meter	9.6	9.6
Standard gutter height in meter	5.2 or 4.2	5.2 or 4.2
Structure height in meter	6 or 5	6 or 5

## Side Roll up (optional)

	L <sub>max</sub>	H <sub>L</sub>	LO (mm)
Single format rolling	30	3.20	710
	50	3.20	710
	80	3.20	710
	2 x 75	3.20	1612

## Schematic Diagram for roof



## Contact Us



**Regd. Office:** No:345, PRK Nagar, Opposite to TNSTC head office, Collector office post, Dindigul-624004, Tamil Nadu, India.  
**Branch Office:** G-01, Dreamscape Towers, 5th Main OMBR Layout, Kalyan Nagar, Bangalore – 560043, Karnataka, India  
**Kenya Office:** P. O. BOX – 273 00623, #2, Silverstone Warehouses, Off Mombasa Road, Near City Cabanas, Nairobi, Kenya.

Africa & Middle East: +254 736277570

naren@prospex.in

Asia Pacific & Mexico: +91 9790970251

ratheesh@prospex.in



[www.prospex.in](http://www.prospex.in)